

# 简介

# INTRODUCTION

负压隔离舱

Negative Pressure Isolation Cabin



# 1

## 研发背景 About us

### 隔离病患 保护医护 Isolated patients and protect medical staff



我们是一家专注于疾病预防和健康管理的专业公司。我们通过自有专利技术、自行研发生产设备等，服务民生，造福大众。新冠疫情发生后，我们迅速组织科学家团队、医生团队和行业专家，开展新冠疫苗、新冠快速检测盒及一些抗疫设备的研发。近期我们成功研发并生产“负压隔离舱”。“负压隔离舱”可以用于确诊患者的救治和疑似患者的隔离，有效救助病人、阻断传染途径，并保护医护人员。“负压隔离舱”可以帮助当地政府短期内完成大规模“方舱医院”的建设。对于新冠疫情大爆发和医疗基础设施不发达的地区，“负压隔离舱”意义重大。

We dedicate to disease prevention and health management. We serve the public through our patented technologies and self-developed facilities. After the outbreak of COVID-19, we quickly organized a professional team composed of scientists, doctors and industry experts to carry out the development of COVID-19 vaccine, detection kit and some anti-virus facilities. Recently, we successfully developed and manufactured a “Medical negative pressure isolation cabin”. This medical cabin can be used to treat confirmed patients and isolate suspected patients with COVID-19. It will effectively support the patients, prevent infection transmission, and protect medical staff. We use the cabins help local government to set up a large-scale "Mobile cabin hospital" in a short time. Especially, it is greatly helpful in massive outbreak and undeveloped medicine Infrastructure area lacking isolation ward.

# 2

## 产品优势 Features

1

舱体密封、舱内负压

The whole cabin is well sealed and with negative pressure inside

2

配备必要的医疗设施，可实现救治和医学隔离

Established with necessary medical facilities to achieve treatment and medical isolation

3

模块化设计，安装方便、可快速组合部署

Modular design, easy installation and rapid deployment

4

整体设计充分考虑保障医护人员安全

The overall design fully considers the safety of medical staff



实景图  
True View

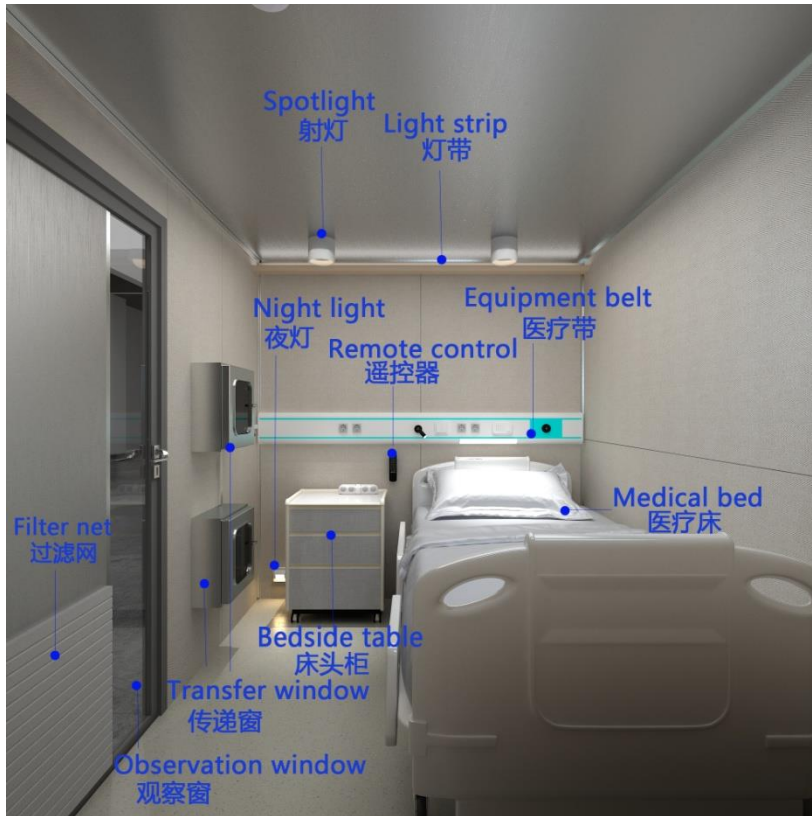


整体效果  
Overall effect



局部效果  
Local effect

# 细节图示: Features & Details



# 3

## 产品特点 Features & Details



# 负压隔离系统

Negative pressure isolation system

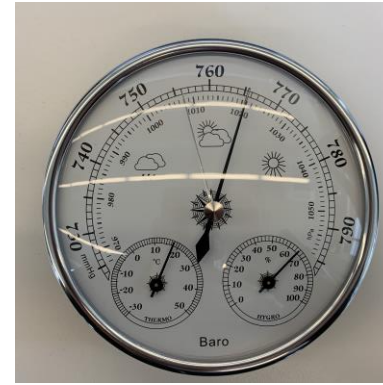
## 1、负压

Negative Pressure

- 密闭舱体和空气调节系统可以实现比大气压低5pa的室内负压。
- 负压的存在有效减少舱内气体的外溢。
- The well sealed cabin and the air regulator system generate the air pressure difference. The pressure inside cabin is 5pa lower than that outside.
- Negative Pressure existed help prevent virus inside to diffusion outside the cabin.

## 2、数据监测配置

Data monitoring



● 温度监测

● 湿度监测

● 气压监测

● Temperature monitoring

● Humidity monitoring

● Pressure monitoring

## 舱体内消毒

Disinfection inside cabin

### 3. 舱内空气过滤 Air inside filtering

舱体密封、流出空气经过三层过滤（100nm）后排出，防止舱内病毒溢出扩散。

The isolation cabin is sealed and air inside outflow via three-layer filter(filter diameter=100nm) to prevent the virus does not spread.

### 4.空气/空间净化消毒 Air/environment disinfection

配备紫外线消毒设备，确保舱内卫生。

Equipped with ultraviolet disinfection equipment to ensure the sanitation of the cabin.

### 5.排泄物消毒 Excreta degradation

排泄物（尿、粪便）消毒、降解以减少粪口传播的风险。

Excreta (urine, feces) disinfection and degradation to reduce the risk of fecal-oral transmission.





### 6. 医疗床 Medical bed

欧盟标准医疗床

European standard  
medical bed



### 7、医用配套 Medical supporting

- 氧气接口
- 输液挂钩
- 电源接口
- oxygen interface
- power sockets
- Infusion hook

### 8、沟通预警系统 Communication& alarm

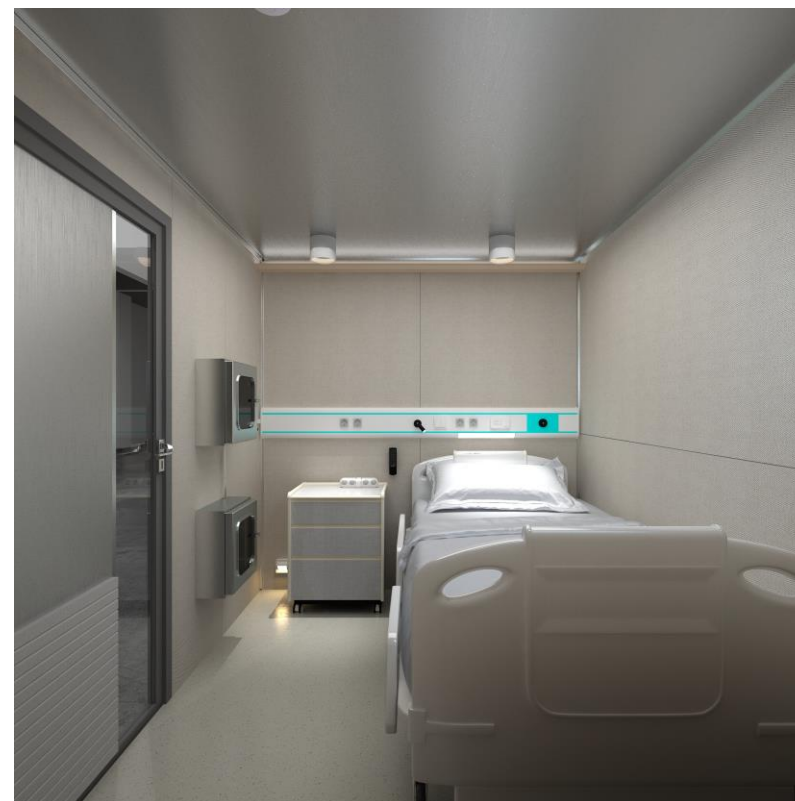
- 对讲呼叫系统
- 单向传递窗
- 提供呼叫和紧急情况  
灯光警示
- 烟雾警报
- Intercom call system
- 2 One-way Transfer window
- Light alarm in case of  
emergency
- smoke alarm

### 9、消毒马桶 Toilet

- 生物降解技术
- 大容量满足5天使用
- 密闭性好
- 承重200kg
- Excreta degradation
- Large capacity for 5 days use
- Well sealed to ensure air condition
- Maximum load 200kg

### 10.娱乐照明系统 Entertainment & lighting

- 配备电视和音响
- 根据需求调节舱内灯光
- TV set and Audio equipment
- Customized Lighting



## 10.其他 Other Feature

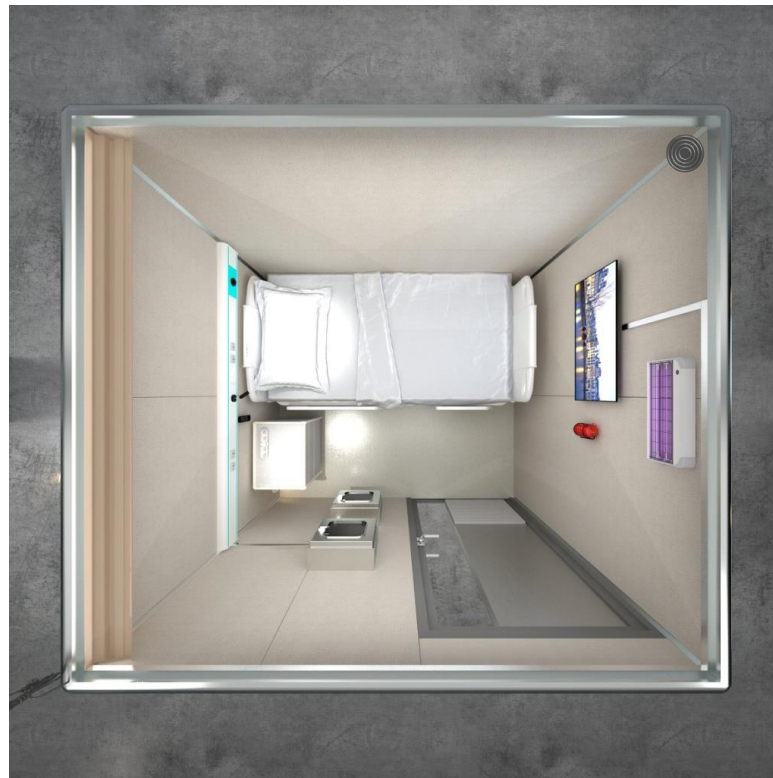
所有材料安全环保，符合欧盟标准。

All materials are safe and environmentally friendly, and meet European standard.

## 灭火器（推荐） Fire extinguisher (Suggested)

建议配备舱内灭火器

We strongly suggest a fire extinguisher in the cabin before the patient get in.



# 4

## 各型医院对比 Comparison

1

临时治疗医院

Temporary treatment hospital

2

方舱医院

Mobile cabin hospital

3

隔离舱医院

Isolation cabin hospital

## 临时治疗医院 Temporary treatment hospital



**建设方式：**在空旷场地上按照标准传染病医院进行建设。  
**优势：**完全按照医院标准建设，完全符合医院医疗标准。  
**劣势：**建造成本高、需要大量土建、人员、设施等，建设难度高。

**Construction mode:** On open ground, the construction should be carried out in accordance with the standard infectious disease hospital.

**Advantages:** Completely in accordance with the hospital standard for construction, fully in line with the medical construction standard.

**Disadvantages:** High cost of construction, and need a lot of civil works, personnel, facilities, etc., and the construction is difficult.

## 方舱医院 Mobile cabin hospital



**建设方式：**利用体育馆、室内停车场、大型厂房等，建设隔离墙体，摆放医疗床，配套医疗设施，开展治疗。  
**优势：**建设成本低。  
**劣势：**需要装修施工，病人居住条件差，没有空气隔离设施，容易造成病毒扩散，形成二次传染。

**Construction mode:** After the construction of separation walls in stadiums, indoor parking lots, large workshops, etc., medical beds and facilities will be laid out, then treatment can be carried out.

**Advantages:** Low cost of construction.

**Disadvantages:** It needs decoration and construction, the living conditions for patients are poor, there is no air isolation facilities, which is easy to cause virus diffusion and secondary infection.

## 隔离舱医院 Isolation cabin hospital



**建设方式：**利用体育馆、室内停车场、大型厂房等。  
**优势：**综合建设成本低；无需装修施工，建设简单快捷；病人居住条件好，房间内空气负压，防止病毒扩散，杜绝二次传染。

**Construction mode:** Set up in stadium, indoor parking lot, large workshop, etc.

**Advantages:** Low cost of construction. No need for decoration, and the installation is simple and fast; the living condition for patients is good, with negative air pressure in the room, and can prevent virus to spread and secondary infection.



谢谢  
THANK YOU